

THE FOUNDERS BUILDING

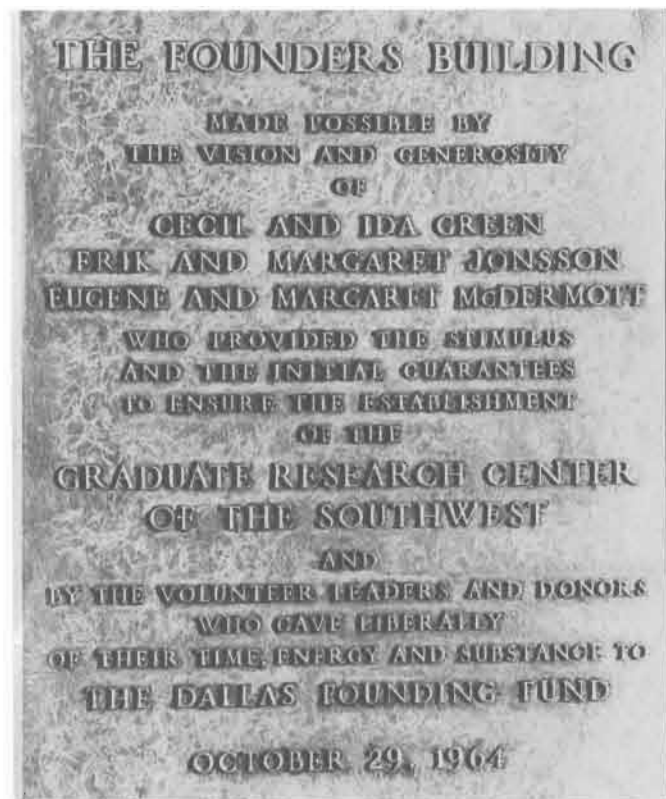
Dedication

October 29, 1964



Southwest Center for Advanced Studies
of the
Graduate Research Center of the Southwest

In dedication...



PROGRAM

2:00 P.M.

--0--

Mr. Erik Jonsson, Master of Ceremonies
Chairman, Board of Directors
Graduate Research Center of the Southwest

--0--

National Anthem	Richardson High School Band Joseph L. Frank, Director
Introductions	Mr. Erik Jonsson
Welcome	Mr. Herb Ryan Mayor of Richardson
The Rise of Scholarship	Dr. Lloyd V. Berkner President, Graduate Research Center of the Southwest
Principal Address	Governor John B. Connally
Benediction	Dr. Luther Holcomb Executive Director, Greater Dallas Council of Churches

The President of the United States will
officially dedicate the building via telephone
circuit during the ceremony.

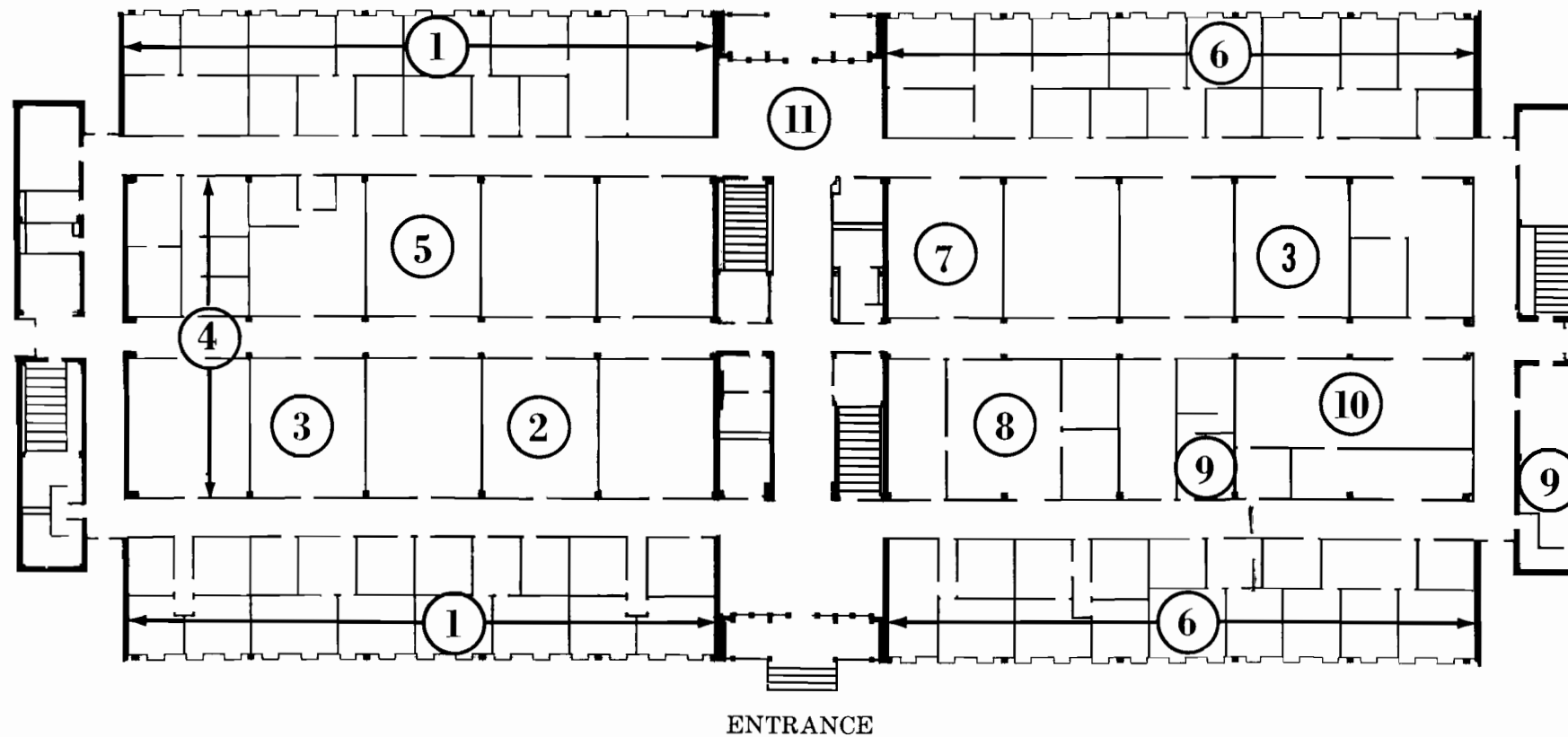
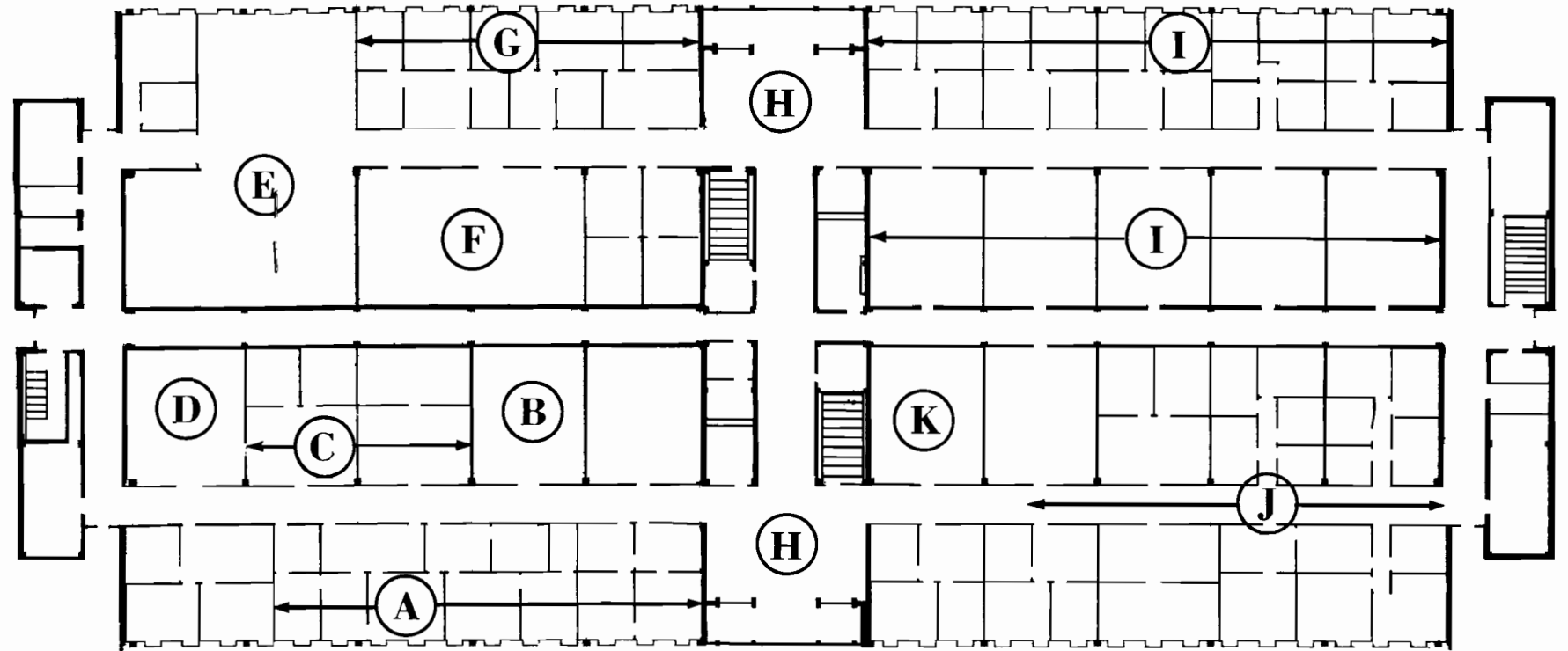
--0--

Guided tours	3:30 to 4:30 p.m.
Open House	4:30 to 6:00 p.m.

THE FOUNDERS BUILDING

SECOND FLOOR LAYOUT

- A — Executive Offices
- B — Board Room
- C — Geochemistry Laboratory
- D — Mass Spectrometer Laboratory
- E — Cafeteria
- F — Seminar Conference Room
- G — Administrative Offices
- H — Displays
- I — Laboratory of Molecular Sciences, Offices and Laboratories
- J — Mathematics and Mathematical Physics Division, Offices and Laboratories
- K — Scientific Library



GROUND FLOOR LAYOUT

- 1 — Geosciences Division Offices
- 2 — Oceanography Laboratory
- 3 — Electronics Laboratories
- 4 — Administrative Services
- 5 — Paleomagnetism Laboratory
- 6 — Atmospheric and Space Science Division, Offices
- 7 — Aeronomy Laboratory
- 8 — Cosmic Ray Laboratory
- 9 — Dark Rooms
- 10 — Machine Shop
- 11 — Display

The Laboratory of Earth and Planetary Sciences...

... was established in 1962 and now has three operating divisions. The overall program of this laboratory provides for fundamental research better to understand the Earth... from its core to its outer atmosphere... and beyond to the sun, space and planets of our solar system.

The Atmospheric and Space Sciences Division is now investigating these broad areas... history of the Earth's atmosphere, atmospheric structure and dynamics, interplanetary plasmas, ionospheric structure and composition, geomagnetism, cosmic rays, aurora and interplanetary atmospherics.

The Geosciences Division program includes studies of seismology, paleomagnetism, geochronology, heat flow, gravity, marine geophysics and Earth surface loading...

all directed toward an understanding of the internal characteristics and structure of the earth.

The program of the Mathematics and Mathematical Physics Division involves studies in theoretical physics related to research in general relativity, gravitational radiation, cosmology, particle field theory and nuclear symmetry.

Additionally, the Dallas Magnetic Observatory was established to observe and record continuously variations in the Earth's magnetic field. The facility is located a few hundred yards southwest of The Founders Building. This area also provides the scientific communities of both industry and education with opportunities to conduct research requiring an area of low magnetic background noise.

The Laboratory of Computer Sciences...

... currently located off the Center campus, was established in the fall of 1963. Two divisions are included in this laboratory which is dedicated to research in basic computer sciences.

The Division of Mathematical and Stochastic Systems has initiated investigations in those branches of mathematics and statistics for which computers offer special opportunities to achieve significant research progress. These studies include numerical analysis, statistical analysis, applied mathematics and multivariate classification.

The Southwestern Data Processing Center is staffed by analysts and programmers who operate the Center computer facility. Services of the Center are currently utilized to meet the needs of scientists and research workers in other laboratories of the Graduate Research Center of the Southwest. Data Processing services will also be made available to universities in the area. Data analysis programs, a program library and new machine language will be developed as the need arises.

The Laboratory of Molecular Sciences...

... is assigned space in The Founders Building which will be occupied during the fourth quarter of 1964. This group was organized to explore the scientific interface between the physical and biological sciences through research programs on the molecular processes fundamental to living organisms.

The staff of the Division of Genetics will seek fundamental answers to questions related to genetics of bacteria, control and synthesis of enzymes, control of genetic recom-

bination, regulation of metabolism, genetic basis of development and differentiation and other areas of genetic study of life. Specialized research equipment for this division will be installed as quickly as it becomes available.

Additional divisions — in the areas of biophysics, biochemistry, cell biology and development are planned to complete the Laboratory's overall program of research in the exciting areas of modern biology.

The Laboratory of Materials Sciences...

... is planned for activation in the near future. Its programs will include broad-scale research with very-high magnetic fields also coupled with low-temperature physics, nuclear and electron resonance phenomena and optical and infrared spectroscopy. There also

will be research in high-pressure and high-temperature physics, relativistic phenomena, crystallography and related fields to provide a better understanding and advance our knowledge of the structure and behavior of matter at atomic and nuclear levels.

The Laboratory of Electronics Sciences...

... when established, will be working to advance the utility of electronics as a research tool through the exploration of new techniques in circuitry and new configurations

in equipment for medical research, space communications, computer instrumentation, astrophysics, geophysics and solid-state physical analysis.