

Erik Jonsson School of Engineering and Computer Science

Evaluation of Mammalian and Bacterial Cell Activity on Titanium Surface Coated with Dicationic Imidazolium-Based Ionic Liquids — Supplement

©2016 The Royal Society of Chemistry. This article may not be further made available or distributed.

Citation:

Gindri, Isabelle M., Kelli L. Palmer, Danyal A. Siddiqui, Shant Aghyarian, et al. 2016. "Evaluation of mammalian and bacterial cell activity on titanium surface coated with dicationic imidazolium-based ionic liquids." RSC Advances 6(43), doi: 10.1039/c6ra01003b

This document is being made freely available by the Eugene McDermott Library of The University of Texas at Dallas with permission from the copyright owner. All rights are reserved under United States copyright law unless specified otherwise.

Supporting Information

Evaluation of Mammalian and Bacterial Cell Activity on Titanium Surface Coated with Dicationic Imidazolium-based Ionic Liquids

Izabelle M. Gindri^a, Kelli L. Palmer^b, Danyal A. Siddiqui^a, Shant Aghyarian^a, Clarissa P. Frizzo^c, Marcos
A. P. Martins^c, Danieli C. Rodrigues^{a*}

^aDepartment of Bioengineering, University of Texas at Dallas, Richardson, TX, 75080

^bDepartment of Molecular and Cell Biology, University of Texas at Dallas, Richardson, TX, 75080

^cDepartment of Chemistry, Universidade Federal de Santa Maria, Santa Maria, Brazil – 97105-900

Corresponding author:

*E-mail addresses: Danieli@utdallas.edu

List of Figures

Figure S1.	Survey spectrum of IL1 coated Ti
Figure S2.	Survey spectrum of IL2 coated Ti
Figure S3.	Calibration curves of (a) IL1 and (b) IL2 in PBS and (c) IL1 and (d) IL2 in saliva
Figure S4.	Percentage of release relative to the deposited concentration (mM)
Figure S5.	Log CFU/ml in fluid and on surface of control Ti, and IL2 coated Ti after exposure to <i>S. Mutans</i>

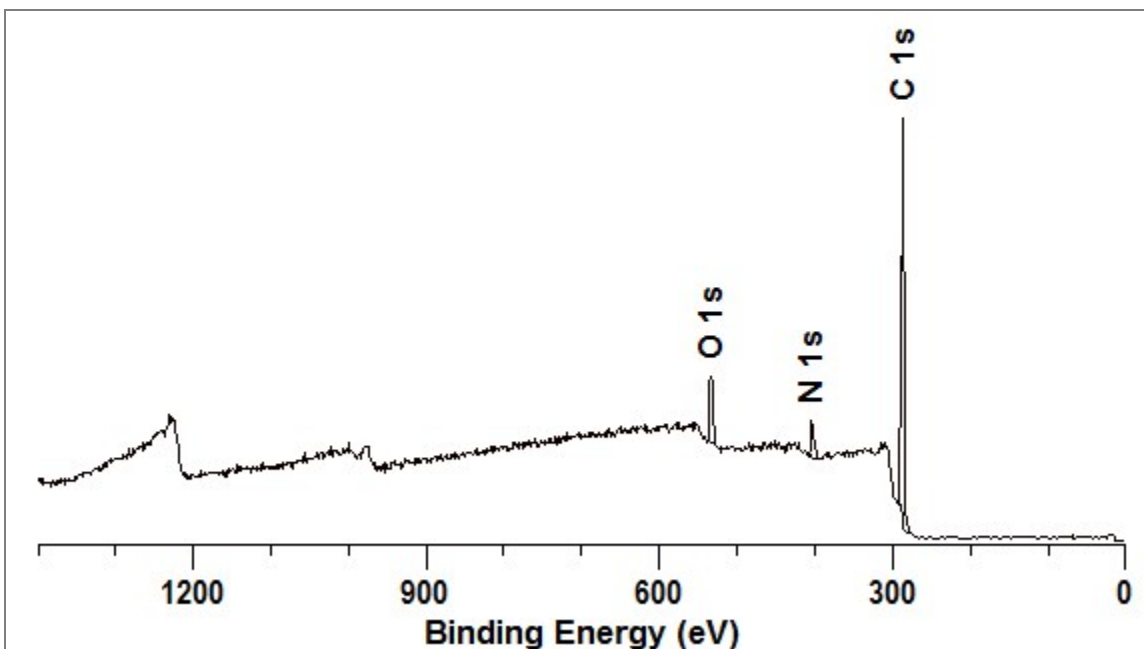


Figure S1. Survey spectrum of IL1 coated Ti.

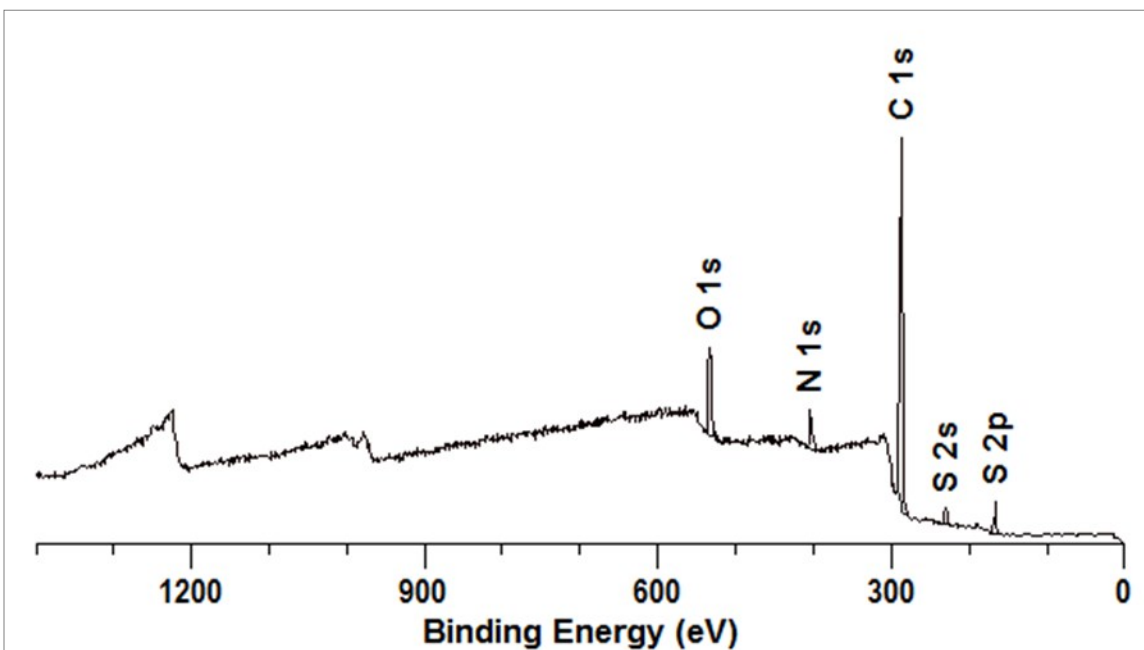


Figure S2. Survey spectrum of IL2 coated Ti.

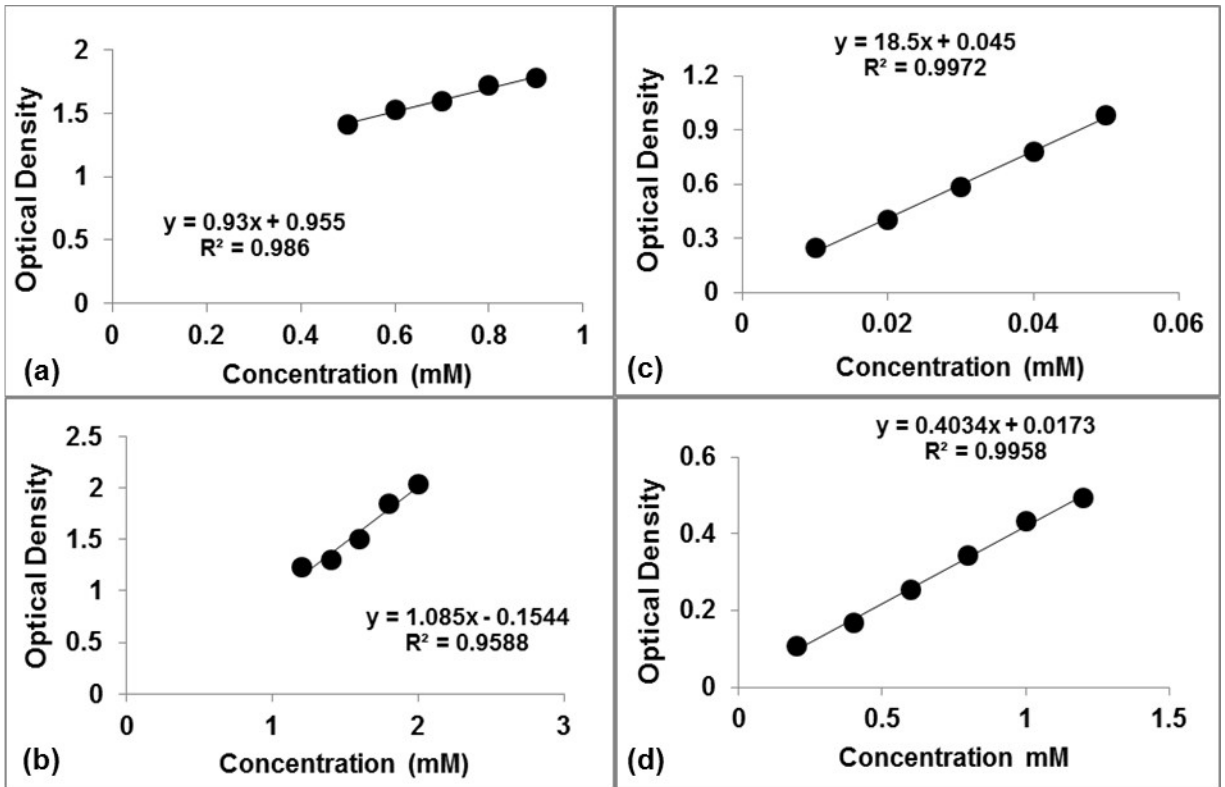


Figure S3. Calibration curves of (a) IL1 and (b) IL2 in PBS and (c) IL1 and (d) IL2 in saliva.

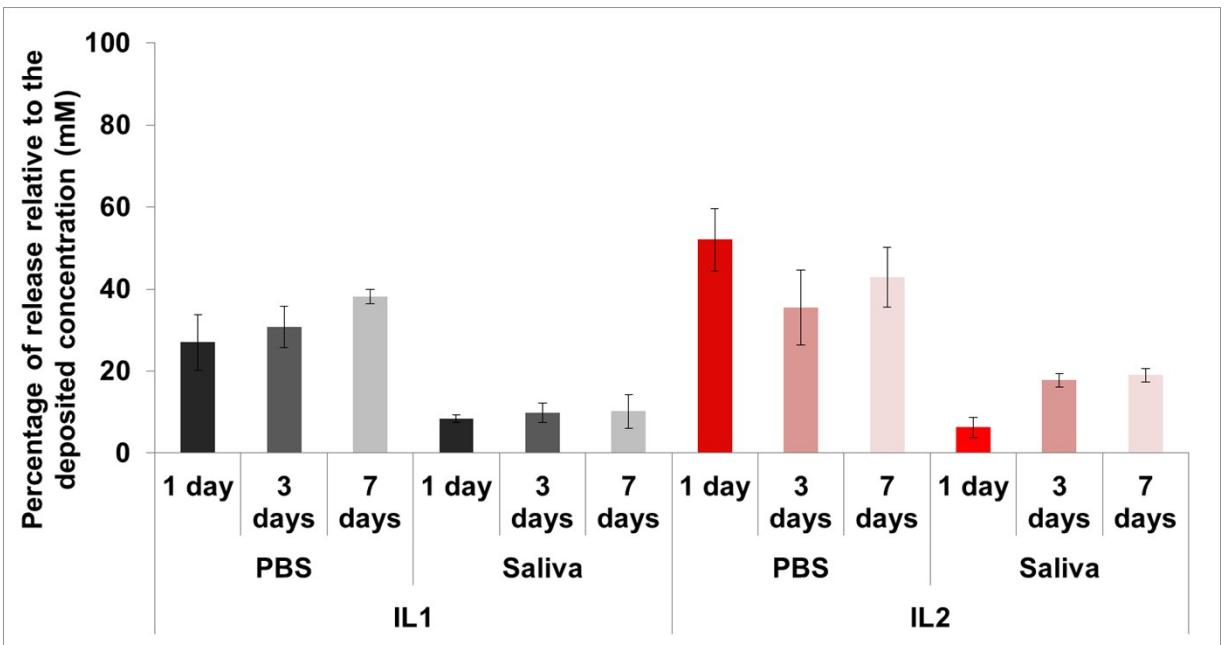


Figure S4. Percentage of release relative to the deposited concentration (mM).

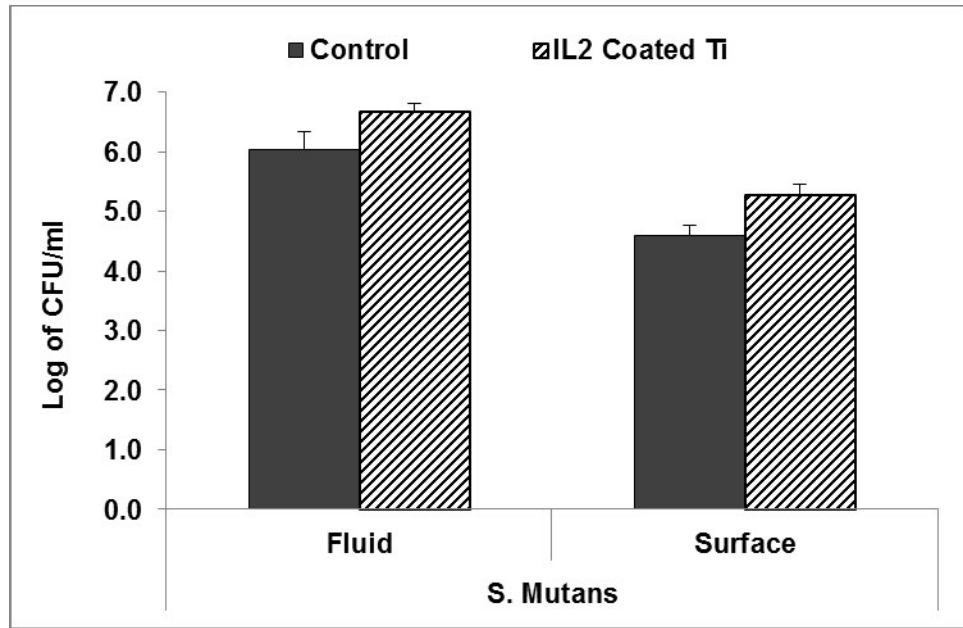


Figure S5. Log CFU/ml in fluid and on surface of control Ti, and IL2 coated Ti after exposure to *S. Mutans*.