

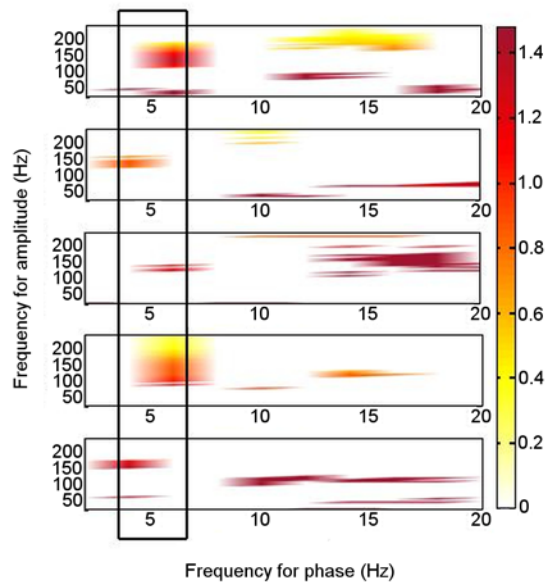
Supplementary Material

Anterior Thalamic High Frequency Band Activity is Coupled with Theta Oscillations at Rest

Catherine M. Sweeney-Reed^{1*}, Tino Zaehle¹, Jürgen Voges^{1,2}, Friedhelm C. Schmitt¹, Lars Buentjen¹, Viola Borchardt², Martin Walter^{2,4}, Hermann Hinrichs^{1,2,3}, Hans-Jochen Heinze^{1,2,3}, Michael D. Rugg⁵, Robert T. Knight⁶

* **Correspondence:** Catherine M. Sweeney-Reed: catherine.sweeney-reed@med.ovgu.de

1 Supplementary Figures



Supplementary Figure 1. Phase–amplitude coupling (PAC) at rest between theta phase and high frequency band amplitude in the left anterior thalamic nucleus in additional clean data.

PAC is shown when it was significant (permutation test: criterion $p < 0.05$). The analysis was performed with additional clean data where available. The top shows data from Patient 2, the middle three panels from Patient 3, and the bottom panel from Patient 5.